

# OUR JOURNEY IN SUSTAINABILITY

## ENERGY TRANSITION

### Powering our Businesses

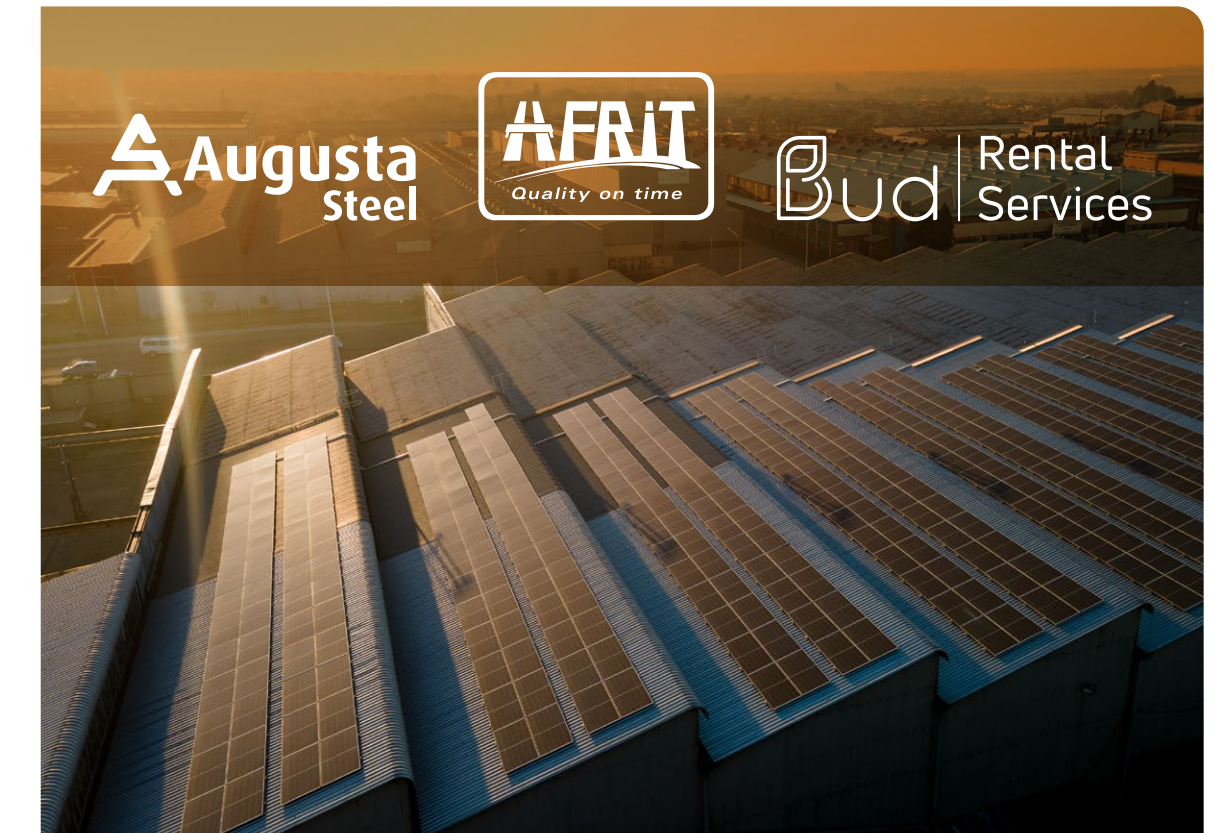
Investing in renewable energy with a significant impact on our bottom line and lasting impact on the environment.



20ft Hubble  
Energy container  
430kWh battery  
storage capacity.



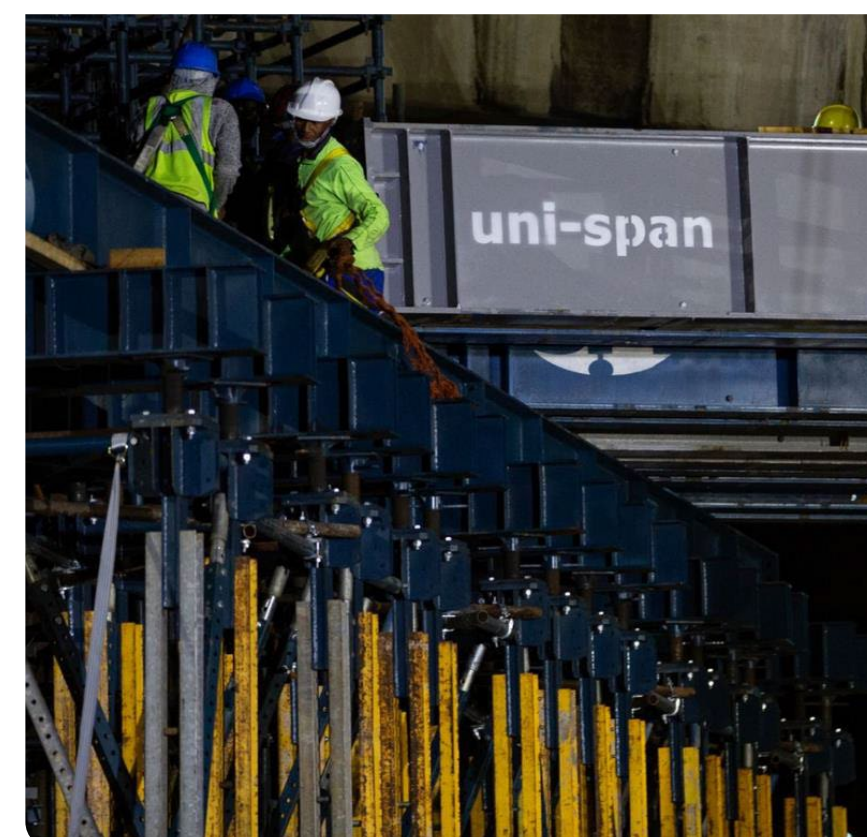
2.211MWh  
Solar and  
Battery  
hybrid.



Our most visible sustainability work this year saw 7 Bud businesses implement energy efficient solutions.

### Critical Infrastructure Creating Opportunities

Projects that contribute to SA Growth and supply resources to connect people, communities and economies.



**EB Cloete Interchange, KwaZulu-Natal**  
SANRAL extensive upgrade of the EB Cloete interchange will improve capacity and efficiency of this vital transport route.



**Brixton Water Tower, Johannesburg**  
With a capacity of 26 million litres, the tower is a crucial component to address Johannesburg water storage and supply challenges.



**Wind Farms**  
Over 80x wind turbines erected and working alongside 8x wind farms.



# OUR JOURNEY IN SUSTAINABILITY

## CONNECTION AND HEARTBEAT

### Tornado Relief, Tongaat



**GOSCOR**  
GROUP

### Vukuzenzele Creche

Local Economic Development Project



**COROBRIK**

### Transformational Development Leadership Programme



**WALVIS BAY SALT**

### Over 80 Learnerships Successfully Completed in 2024



**AFRIT**  
Quality on time

### Matric Intervention Programme



**IDWALA**  
INDUSTRIAL HOLDINGS LIMITED

**BUD** IN THE  
EVERYDAY

**6 000**

PERMANENT  
STAFF

**12**

COUNTRIES  
IN AFRICA

**09**

PROVINCES IN  
SOUTH AFRICA

**220**

LEARNERSHIPS  
GRANTED

**167**

BURSARIES  
AWARDED

**R18 155M**

L&D SPEND

**BUILT  
TO  
GROW.**